

December 2008.  
Updated April 2013.



A COMPARISON OF FEATURES IN GOOGLE EARTH 7.0  
AND  
GOOGLE EARTH PRO 7.0

Google Earth is a virtual globe, map and a GIS program that offers users access to world-wide imagery, and a large number of location-based layers. Google Earth Pro is a commercial-oriented upgrade to Google Earth that offers additional features such as GIS data imports and advanced printing and saving modules.

## License

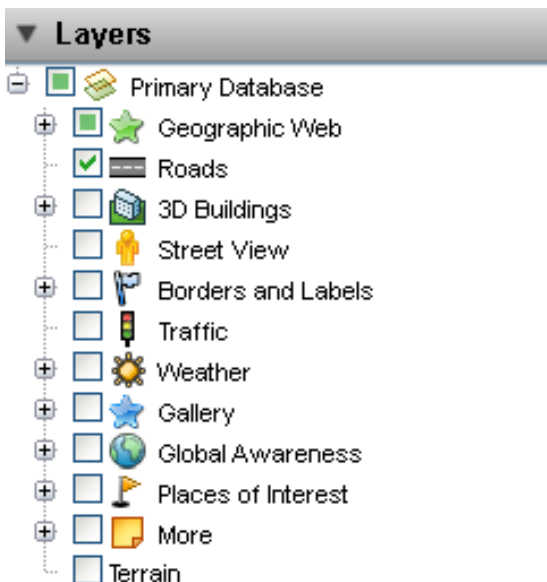
	<i>Google Earth</i>	<i>Google Earth Pro</i>
	Download free version	Purchase Professional version for \$400 annual subscription free

## Geographical Content

	<i>Google Earth</i>	<i>Google Earth Pro</i>
	Geographical content is identical in both versions	

### Such as:

- Satellite Imagery/Orthoimagery
- StreetView
- Search for Points of Interest (schools, parks, hotels, etc).
- Driving Directions
- Explore featured content (Rumsey maps, National Geographic, etc).



## Geospatial Data Import

---

### *Google Earth*

---

- Google Earth (KML, KMZ)
- GPS (.gpx, .loc)

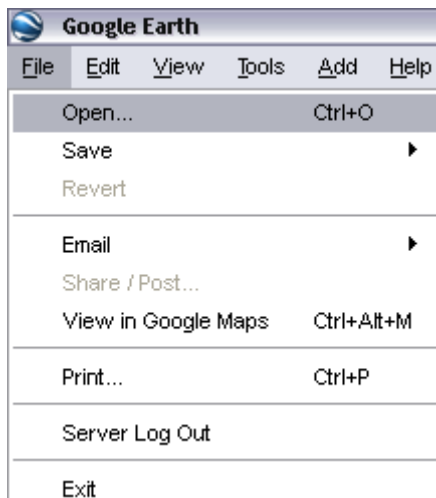
### *Google Earth Pro*

---

- Google Earth (KML, KMZ)
- GPS (.gpx, .loc, .mps)
- Imagery (**GeoTiff**)
- ESRI (**.shp**)
- MapInfo (.tab)
- ERDAS Imagine (.img)
- More...



Geospatial files can be opened in Google Earth Pro from the File Menu, or they can be dragged onto the screen



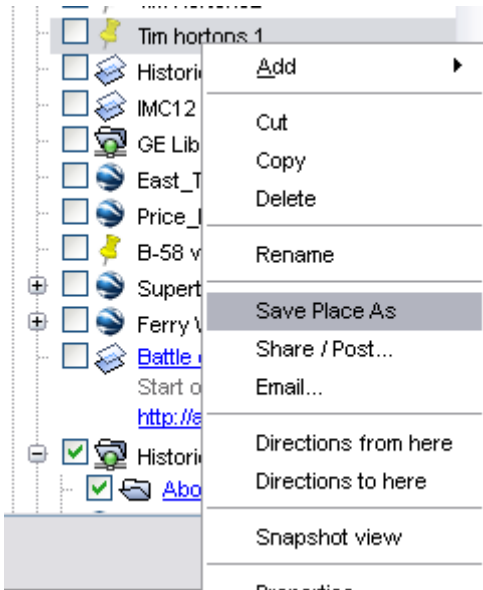
When working with GeoTiff images in Google Earth Pro, ensure the image has a defined projection (can be done in ArcMap), otherwise the spatial coordinates will not be recognized



Projected and unprojected Shapefiles are supported in Google Earth Pro



All geospatial files can be converted into KML format in Google Earth Pro by right clicking on the layer and selecting 'Save Place As'.



## Other Data Import

### *Google Earth*

### *Google Earth Pro*

- |   |  |
|---|--|
| <ul style="list-style-type: none"> <li>- Images (jpg, tif, png, gif)</li> </ul> | <ul style="list-style-type: none"> <li>- Images (jpg, tif, png, gif)</li> <li>- Text (.txt, .csv)</li> <li>- GPS data imports for Magellan and Garmin devices</li> </ul> |
|---|--|



Images may be imported and georeferenced by importing the image as an "image overlay" from the ADD menu. Please see supporting documents for instructions



Tabular data in text format may be imported and geocoded by address or latitude/longitude in Google Earth Pro. Up to 2500 records. This is done by opening the table from the FILE menu.



All imported images and tabular files can be converted into KML format in Google Earth Pro

# Mapping Tools

## Google Earth

## Google Earth Pro

- Drawing tools
- Ruler – measure distances

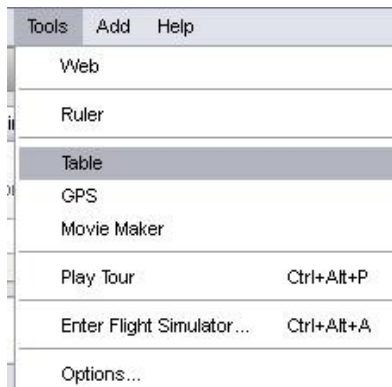
- Drawing tools
- Open attribute table
- Ruler – measure distances and areas incl. polygons and circles



Drawing tools include creating points, lines, and polygons



Attribute table may be sorted by ascending or descending order but does not support other queries. The table can be accessed from the Tool menu in Google Earth Pro.



The ruler is available from the row of icons at the top of the screen.



## Screen Print and Save

---

### *Google Earth*

### *Google Earth Pro*

---

- |   |  |
|---|--|
| - Prints lower quality images<br>(1000 pixels)    | - Prints higher quality Images<br>(4800 pixels)    |
| - Saves lower quality jpg images<br>(1000 pixels) | - Saves higher quality jpg images<br>(4800 pixels) |



Both printing and saving functions can be found from the File menu.

